

Monitor Arm

Lima

Operating Guidelines

MAINTENANCE AND INSPECTION

Ensure all screws are tightened and occasionally adjust if needed.

Clean with a damp cloth, NO solvent.

NOTES

Total max weight 6.5kg/14LB

Ensure desk/work surface/wall/partition is suitable to take the weight of the arm/s and monitors.

Do not use this product for any purpose other than that for which it was designed.

Supported weight must not exceed 6.5kg (14lb) per arm.

Hold the monitor tightly when making adjustments.

Care should be taken to avoid trapping fingers.

Do not dismantle or remodel the arms.

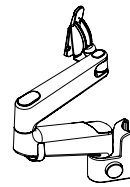
Do not attach the monitor before assembling arm.

Some monitors have recesses and may require spacers or a 75mm VESA plate.

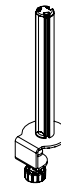
The screws supplied for the installation of the arm are supplied in good faith and with the intention that they will be used with the correct monitor, namely a monitor with VESA mounting holes. Please therefore check before attempting installation that you have the appropriate equipment on which to carry out the installation.

Vidak cannot be held liable for any damage caused to your equipment resulting from a failure to make this check.

Please also carefully read the installation instructions to ensure correct fixing.



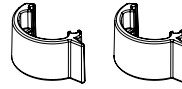
Monitor arm 1x



Post and clamp 1x



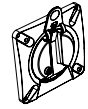
Clamp pad 1x



Cable clips 2x

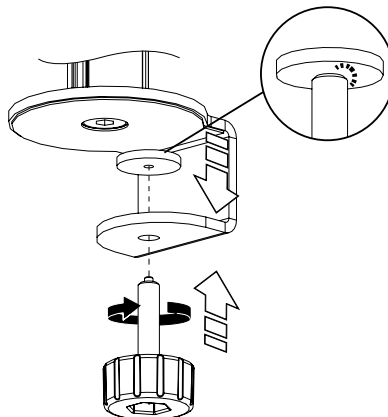


M4 x 12 4x
M4 x 10 4x
Optional security screw 1x



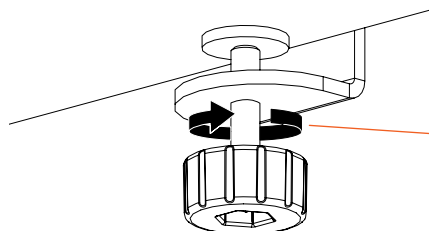
Monitor arm 1x

Install post and clamp



Ensure clamp is fully flush against the back of the desk.

Install clamp pad



Position post and clamp onto desk

Ensure bolt is fully tightened (4-7NM recommended torque)

Fully tighten clamp pad to the underdesk

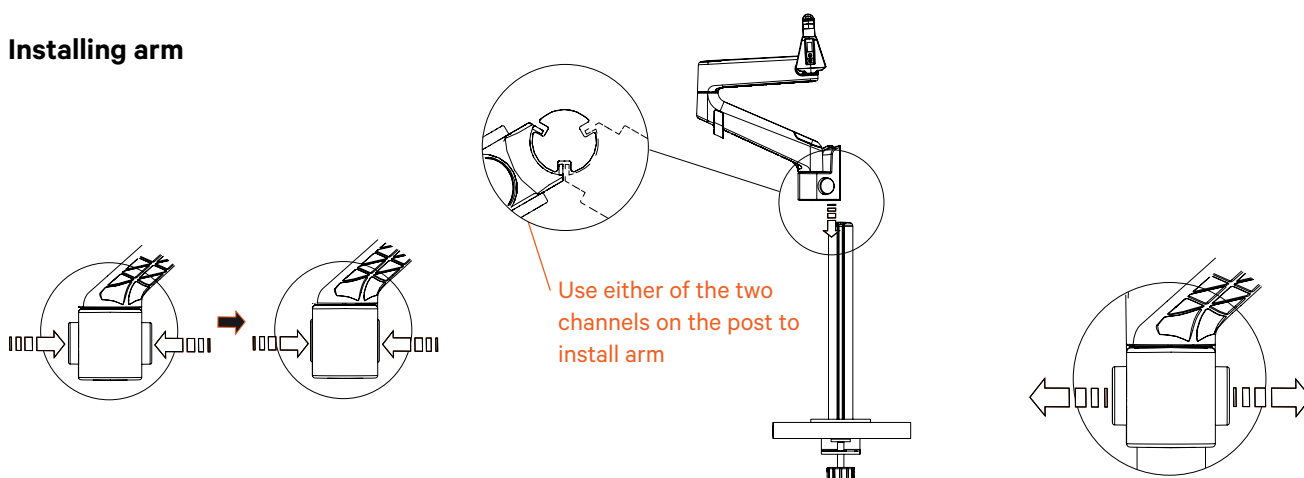
Additional tightening can be achieved by using 6mm allen key into toolless adjuster (not supplied)

Monitor Arm

Lima

Operating Guidelines

Installing arm

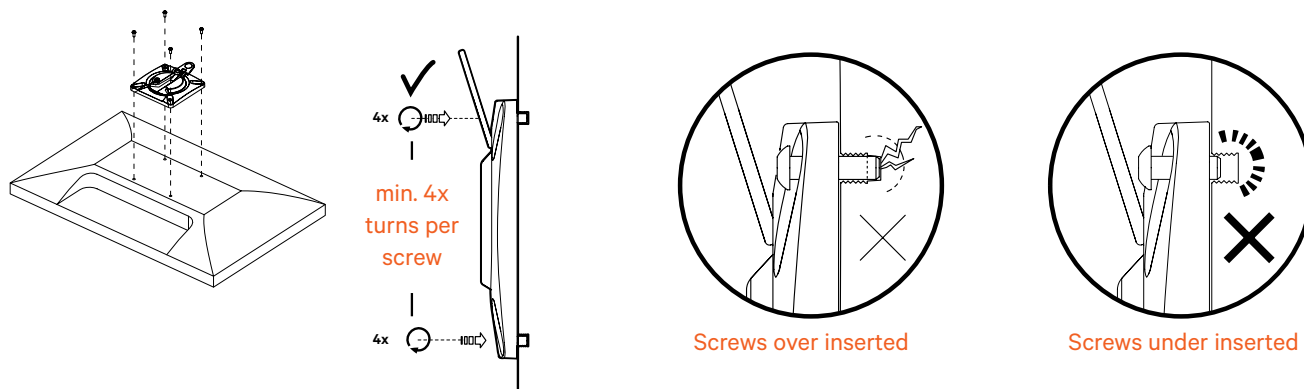


Compress and hold both buttons

Slide arm onto the chosen channels of the post

Release buttons to clamp arm to post

Attach monitor mount plate to monitor



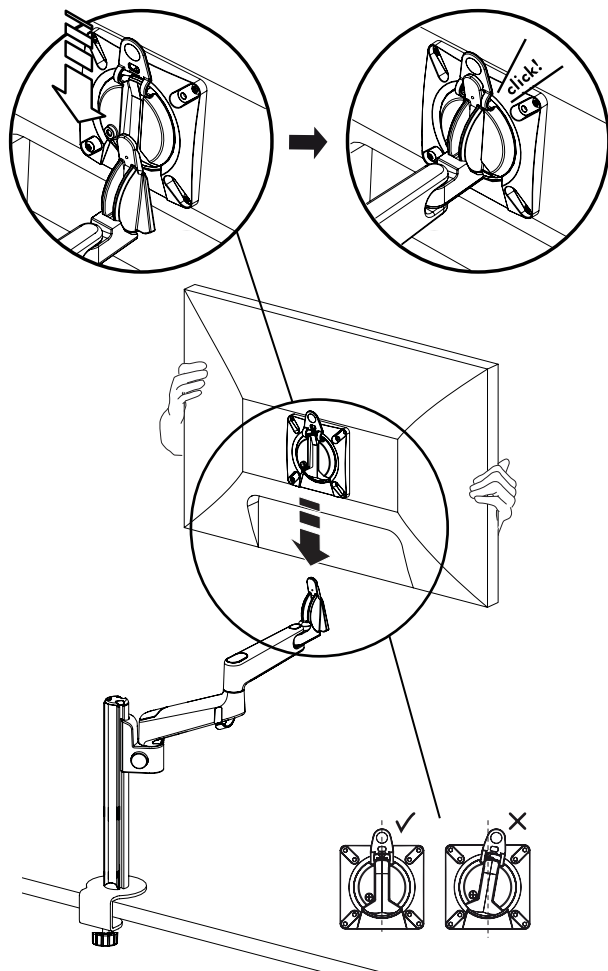
Use screws supplied. Be sure to select correct length.

Monitor Arm

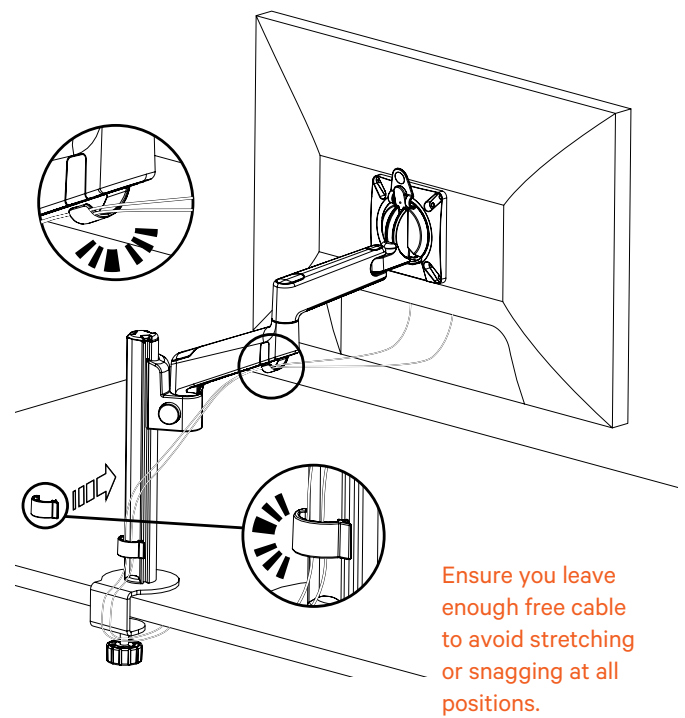
Lima

Operating Guidelines

Mount monitor to arm



Install monitor cables into cable management features

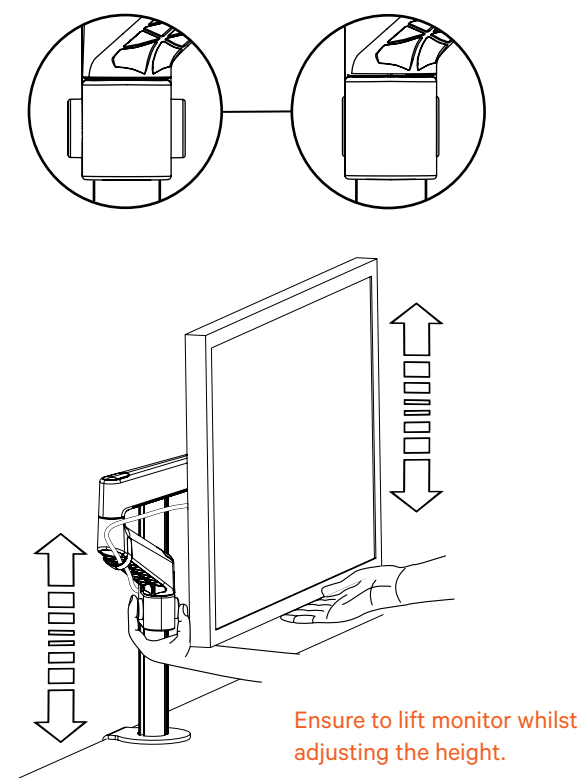


Monitor Arm

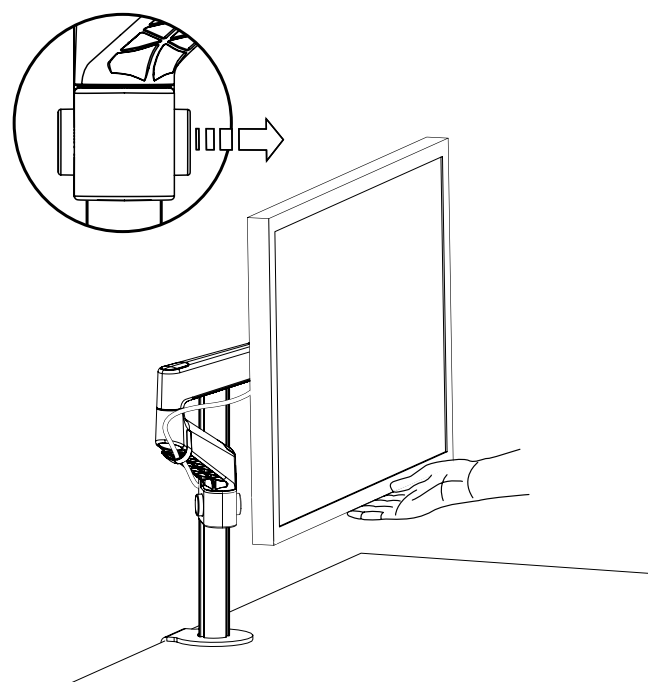
Lima

Operating Guidelines

Height adjustment



Support screen and then compress buttons to adjust screen to required height



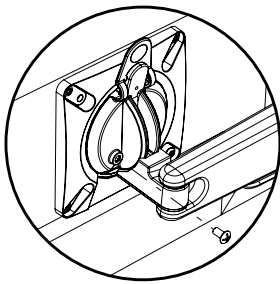
Release buttons whilst still supporting the screen

Monitor Arm

Lima

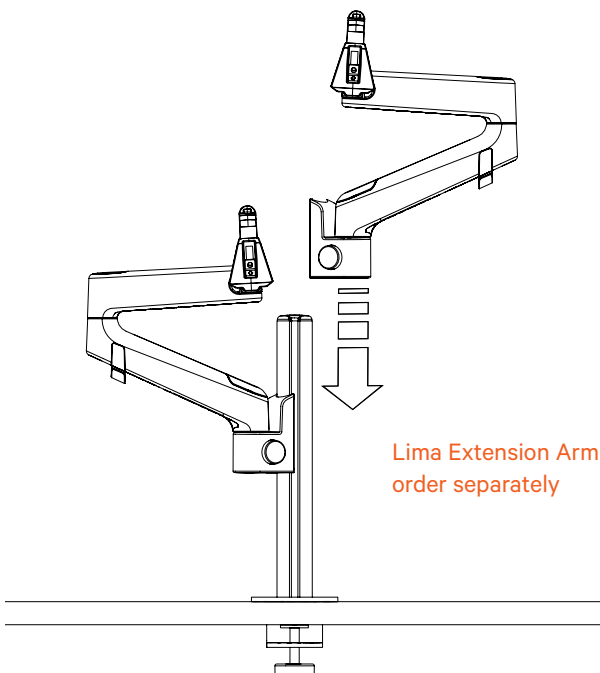
Operating Guidelines

Optional - Fit security screw if required



Compress and hold both buttons

Optional - For dual screen fully repeat steps 2 - 8



Optional - Adjust monitor tilt if required

Monitor tilt should balance with factory settings. If monitor tilt is stiff or droops adjust friction using adjuster screw beneath tilt joint using a 3mm allen key.

