

# Worksystems

## Blade Workstation









# Worksystems

## Blade Workstation

### FEATURES

A flexible solution for workplace environments. Incorporating integrated cable management through the internal chamber of the leg, the Blade workstation has been developed to provide a consistent aesthetic in workplace environments when used with the Blade table base program.

Accessories include upholstered, pin-able screens in two heights for the spine and interpersonal, parcel shelf, under desk cable tray or with the option of above desk power units, and a series of document trays and parcel shelves and mobile pedestals.

Worktops are to standard laminate or client specified finish.

Option for C.ME to clip onto accessory rail for screens.

4-6 week lead time

Matching family of Blade tables; mobile flip, leaner, meeting



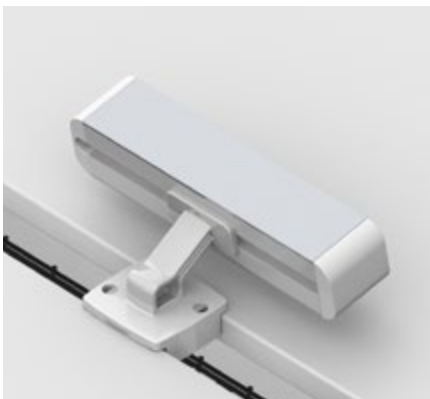
Cables can be concealed in the legs



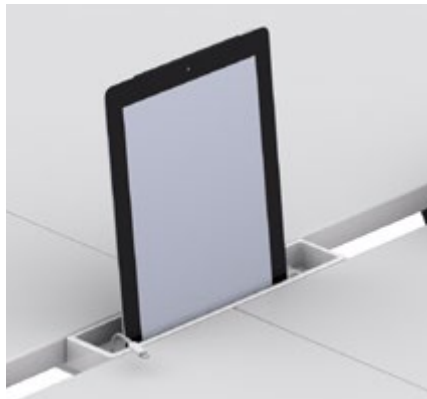
Blade workstation - Single



Blade workstation - 4 Pod



Power rail - Mounted into accessory rail



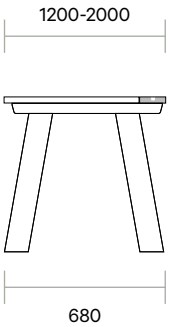
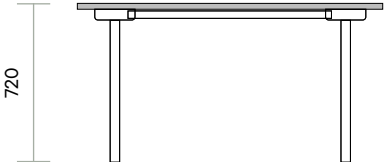
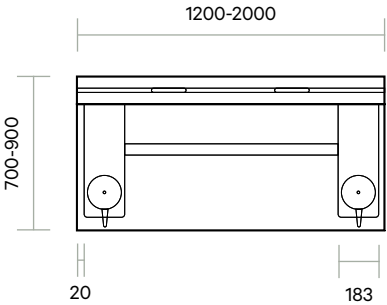
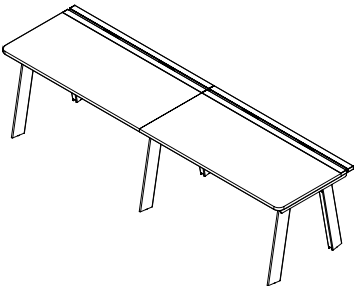
Accessory rail



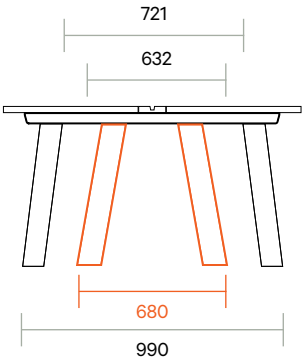
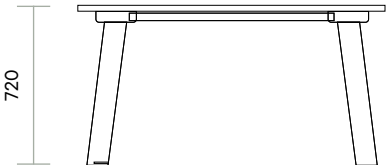
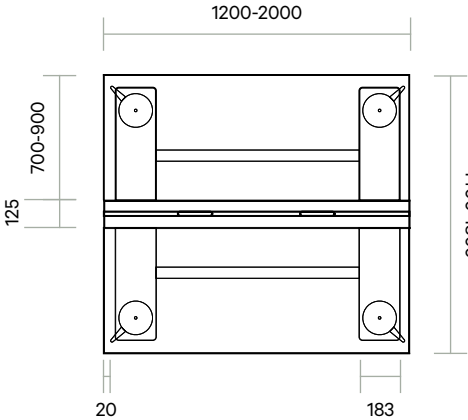
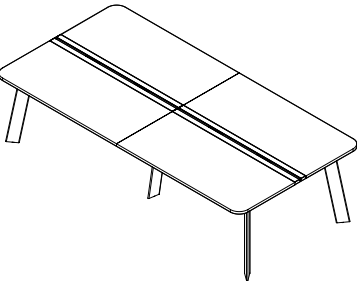
Cable tray

# Worksystems

## Blade Workstation



### Single sided workpoint



Inset legs shown for benching option

### Back to back workpoint







vidak.co.nz

---

**Auckland**

66 Lady Ruby Drive  
East Tamaki, Auckland 2013  
PO Box 58820 Botany  
Auckland 2163  
New Zealand

T +64 9 273 0033  
F +64 9 273 0032

E [sales@vidak.co.nz](mailto:sales@vidak.co.nz)

---

**Wellington**

303 Willis Street  
Te Aro, Wellington 6011  
PO Box 9171  
Wellington 6011  
New Zealand

T +64 4 802 4615  
F +64 4 802 4659

E [sales@vidak.co.nz](mailto:sales@vidak.co.nz)

